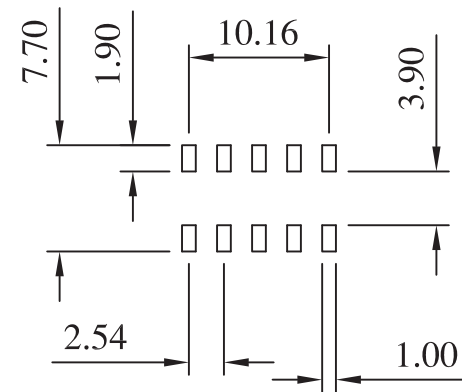


Current Rating: 3 Amps
 Insulator Resistance: 5000 Megohms min
 Contact Resistance: 20 m ohms max
 Dielectric Withstanding: 1000 V AC
 Operating Temperature: - 40° ~ +85° C
 Max Processing Temp: 230° C for 60 seconds
 260° C for 10 seconds

Note:
 Contact Material: Phosphor Bronze
 Insulator Material: High Temperature Thermoplastic.UL 94V-0
 Finish: Tin,Gold Plated

Duplex Plating: Gold Plated on contact area,
 Tin on solder area

Recommended P.C. Board
 SMD Layout



(RoHS Compliant)

P1 N 71 - 2 05 D0 BK X A01 X
 1 2 3 4 5 6 7

- Standard: N= Nylon-6T
- Circuits: 10 pin
- Taill Style:
 D0= No Peg
 D1= With Peg
- Color: BK=Black

- Contact Plated:
 T=Matte Tin over Nickel
 W=Matte Tin over Nickel 150u"
 Y=Bright Tin over Nickel
 C=Gold Flash
 F=Gold Flash,Matte Tin 100u"
 A=Gold 3u"
 B=Gold 3u",Matte Tin 100u"
 D=Gold 5u"

- Gold Plating:
 E=Gold 5u",Matte Tin 100u"
 G=Gold 10u"
 J=Gold 10u",Matte Tin 100u"
 L=Gold 15u"
 M=Gold 15u",Matte Tin 100u"
 U=Gold 30u"
 V=Gold 30u",Matte Tin 100u"

6. A01= BLOCK # 02 or 09 pin

7. Packing:

- E= CAP+Tap & Reel
- F= CAP+Tube
- G= CAP+Tray
- H= CAP+Bag

EVERTRON

PART NO	P1N71-205D0BKXA01X	.X ±0.3	.XX ±0.20	.XXX ±0.100
DRAWING NO	PB-00338	EDITION: C		ITEM: PB
DRAWN BY	JARRY	2013/07/24		SCALE: 1:1
APPROVAL BY	Peter pan	2013/07/24		UNIT: m.m

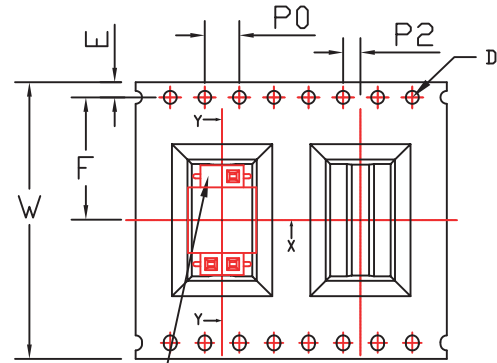
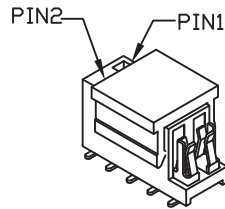
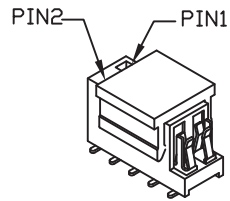
NOTE:

1. 10 sprocket hole pitch cumulative tolerance±0.2
2. Carrier camber is 1mm in 100mm
3. A0 and B0 measured on a plane 0.3mm above the bottom of the pocket
4. K0 measured from a plane on the inside bottom of the pocket to the top surface of the carrier
5. All dimensions meet EIA-481-2 requirements
6. 13"1R=7.5M 400PCS

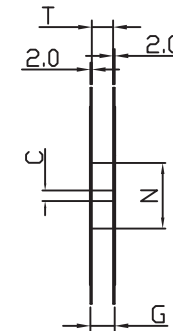
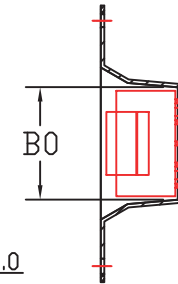
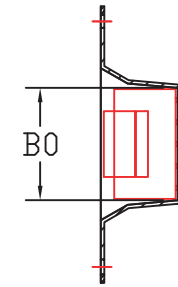
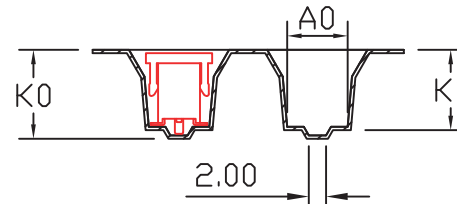
DEVICE TYPE: P1N71-205DXBKXA01E MATERIAL : P.S 0.40 BLACK

ITEM	A0	K0	P1	E	D	P0	P2
DIM	7.0 ^{+0.1} _{-0.1}	8.9 ^{+0.1} _{-0.1}	12 ^{+0.1} _{-0.1}	1.75 ^{+0.1} _{-0.1}	1.5 ^{+0.1} _{-0.0}	4.0 ^{+0.1} _{-0.1}	2.0 ^{+0.1} _{-0.1}

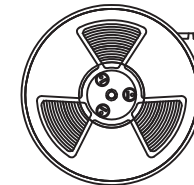
P1N71-205D0BKXA01P P1N71-205D1BKXA01P



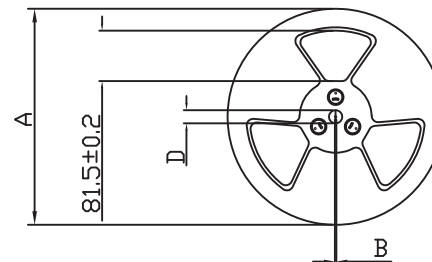
請注意塞孔放置方向



出料方向 →



CIRCUITS	W	B0	F
10 pin	32	13.00	14.2



Dimension							Carrier Tape
A	B±0.5	C±0.2	D±1.0	N±1.0	T±0.1	G±0.1	W
330	2.2	13	20.2	100	8.5	13.1	8
330	2.2	13	20.2	100	12.5	17.1	12
330	2.2	13	20.2	100	17	21.1	16
330	2.2	13	20.2	100	24.5	29.1	24
330	2.2	13	20.2	100	32.5	37.0	32
330	2.2	13	20.2	100	44.5	49.1	44
330	2.2	13	20.2	100	56.5	61.1	56
330	2.2	13	20.2	100	72.5	77.1	72
330	2.2	13	20.2	100	88.5	93.1	88

EVERTRON

PART NO	P1N71-205DXBKXA01E (T&R)		.X ±0.3	.XX ±0.20	.XXX ±0.100
DRAWING NO	BOX-00223	EDITION: C	ITEM: TR		
DRAWN BY	JARRY	2013/07/25	SCALE: 1:1		
APPROVAL BY	Peter pan	2013/07/25	UNIT: m.m		