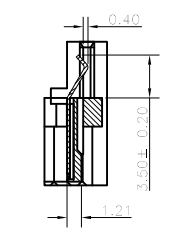
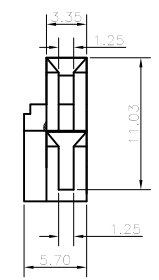
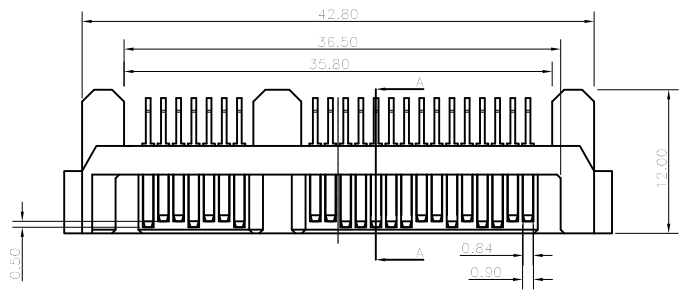
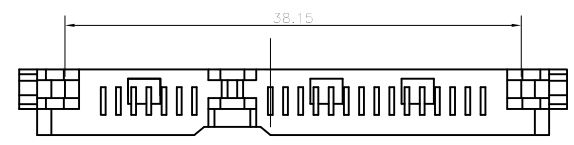
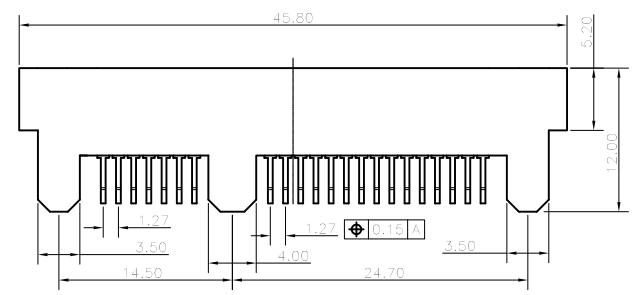
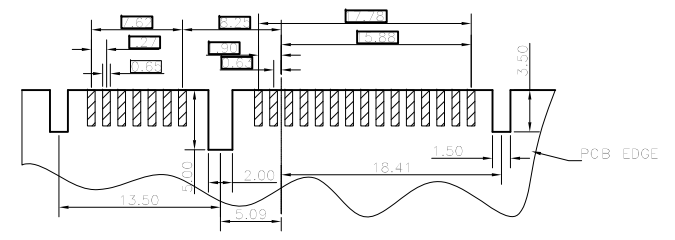
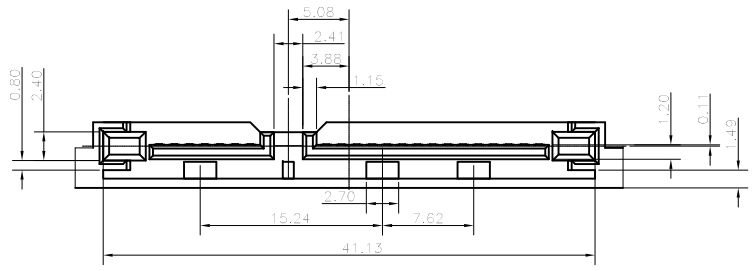


版本 REV.	變更內容 MODIFICATION	日期 DATE	修改 DRAW

NOTE:  
 PRODUCT MUST MEET RoHS SPEC.  
 HOUSING:LCP E130i WITH 30%GF, UL 94V-0,BLACK.  
 CONTACTS:BRASS C2680-H T=0.25.  
 2.FINISH:  
 1~3u"min AU PLATED SEE TABLE.  
 50u"MIN NICKEL UNDER PLATED OVER ALL.  
 100u"MIN MATTE TIN PLATED IN SOLDER TAIL.  
 3.WAVE SOLDER CAPABLE TO 265°C  
 4.MARKED SHOULD BE CONTROLLED BY QIP  
 5.MARKED SHOULD BE MEASURED IN FAI  
 6.ELECTRIC:  
 CONTACT RATING: 1.5A PER CONTACT  
 CONTACT RESISTANCE: 30mΩ MAX  
 INSULATION RESISTANCE: 1000MΩ MIN  
 DIELECTRIC WITHSTANDING VOLTAGE: 500VAC  
 OPERATING TEMPERATURE: -40C - +85C



SECTION A-A  
SCALE 2:1



PART NO:		MATERIAL:	ETT EVERTRON	
MODEL NO:		FINSH:		
UNIT: mm	SIZE: A4	COLOR:	PART NAME:	
TOLERANCE UNSPECIFIED		DR:	SATA 7+15P卡板式公头(去三角,卡槽加深)	
.X	±0.30	CHK:	DWG NO: ET-SATA-22-S	REV: A0
.XX	±0.20	APP:	SCALE: 1:1	SHEET: 1 of 1
.XXX	±0.10			
ANGULAR	±3°			

