



EVERTRON TECHNOLOGY



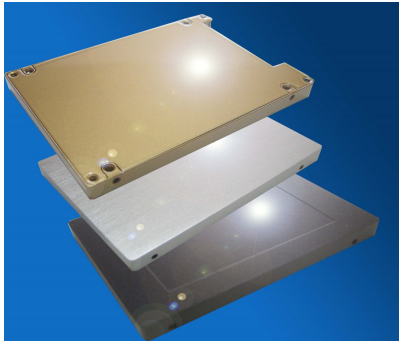
Precision

Sharp

Efficient

2.5 inch SSD CASE 9.2mm Height

TB-XX



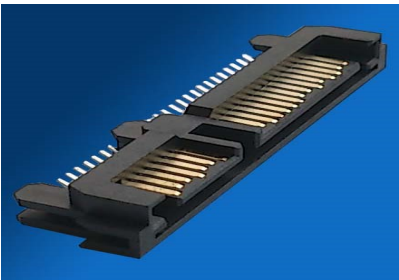
2.5 inch SSD CASE

- Die casting+Stainless cover
- Height 9.2mm

Color : Silver/Black/

Gold Painting

OEM/ODM available

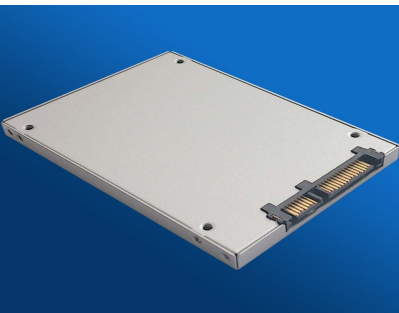


22 Pin SATA connector

- SATA 22 Pin, Straddle mount
- Gold Flash/15u" /30u" is available

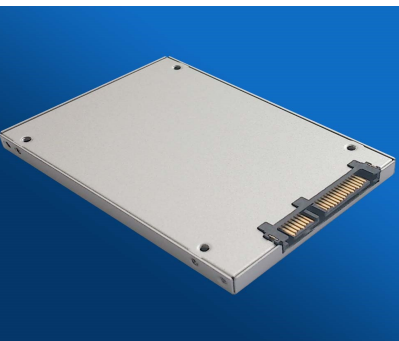
Slim type 2.5 inch SSD CASE 5.0/7.0mm Height

TB-XX



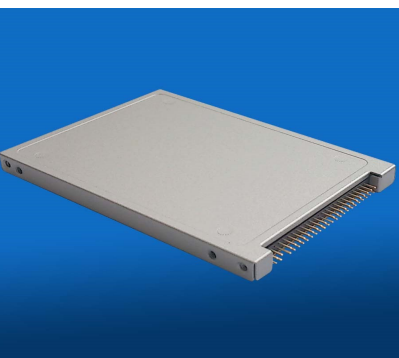
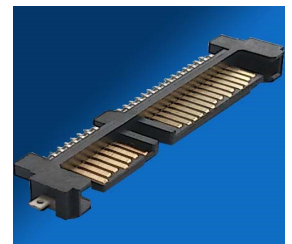
Slim type 2.5 inch SSD CASE

- Slim type 5 mm , SATA connector, for Ultrabook application
- Interface : 22 Pin SATA connector



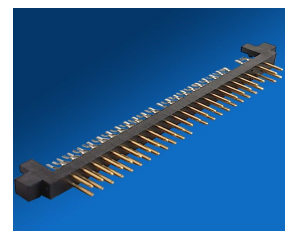
Slim type 2.5 inch SSD CASE

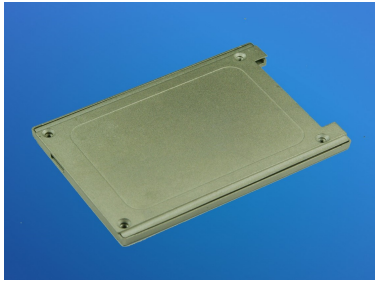
- Slim type 7 mm , SATA connector, for Ultrabook application
- Interface : 22 Pin SATA connector



Slim type 2.5 inch SSD Case

- Slim type 7mm, IDE connector, for Ultrabook application
- Interface : 50 Pin IDE connector

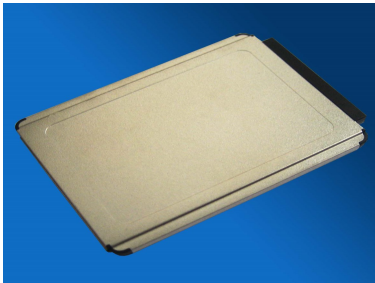




1.8 inches SSD CASE– Die Casting

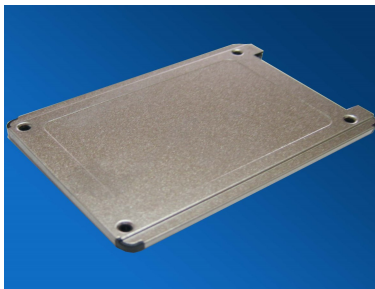
- 1.8" SSD Case - Die Casting
- Thinnest place : 0.5mm
- Color : nickel plating
- Interface : CF connector

*OEM /Custom made
only*



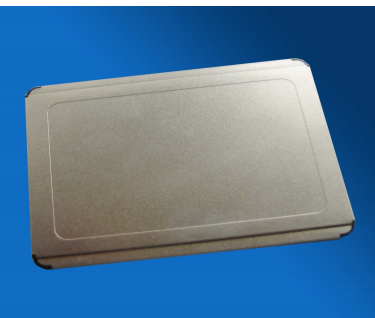
1.8 inches SSD CASE-CF type

- Metal+Plastic frame, 5mm height
- Interface : CF connector



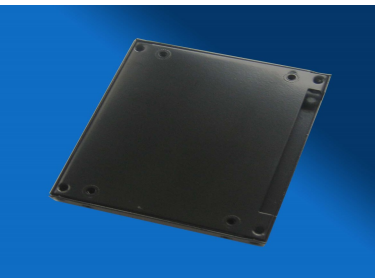
1.8 inch SSD Case-micro SATA

- Metal+Plastic frame, 5mm height
- Interface : 16 Pin micro-SATA connector



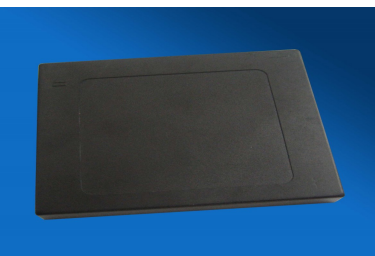
1.8 inch SSD-ZIF type

- Metal+Plastic frame, 5mm height
- Interface : ZIF connector



1.8 inch SSD CASE-IDE type

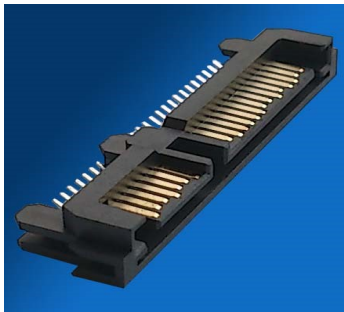
- 1.8 inches SSD Case, 8.5mm height
- Interface : IDE 50 Pin connector



1.8 inch SSD CASE-SATA type

- 1.8 inches SSD CASE, 8.2mm height
- All Plastic
- Interface : SATA 22 Pin connector

SATA/IDE/eUSB/SFF-8639(U.2) Connector for SSD Application



SATA 22 Pin Straddle Mount

- Male/22pin
- G/F, 15u" ,30u" gold



SFF-8639 connector

- SAS+PCIe/U.2
- Male, 68 Pin
- 30u" gold plating



SATA 22 Pin Low Profile

- Male/22 Pin, Low Profile
- G/F, 15u, 30u gold plating



SFF-8639 connector

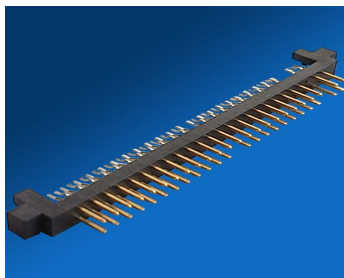
- SAS+PCIe/U.2
- Female, 68 Pin
- 30u" gold plating



Micro SATA 16 Pin

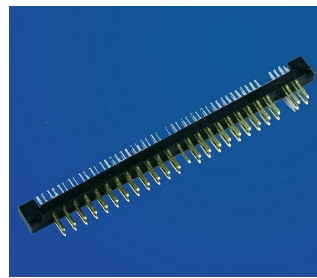
- Male/16Pin,
- 15u gold plating

*Various connector for
SSD /storage
application*



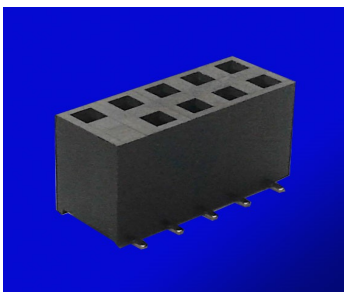
IDE 50 Pin for SSD

- Male/50pin/SMT type



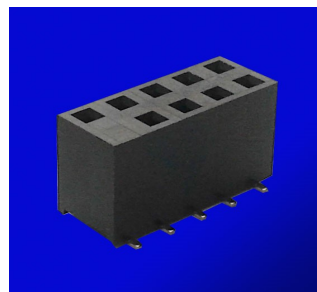
IDE 50 Pin for SSD

- Male/50pin/SMT type



Embedded USB for SSD

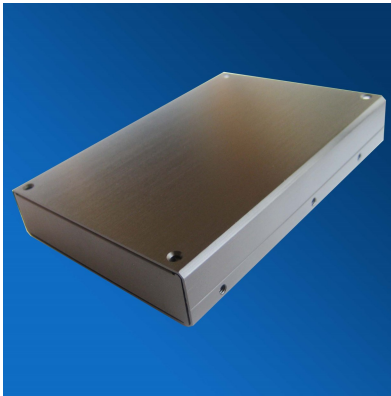
- 2.0mm, 9 pin, G/F,
- Height: 3.5mm/4.4mm



Embedded USB for SSD

- 2.54mm, 9 pin, G/F , 10u
- Height: 7.4mm

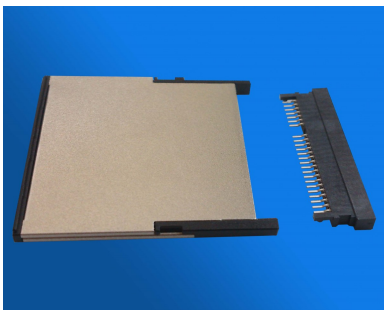
3.5 inches SSD CASE



Product Description

- Height: 25.4 mm
- Interface: 22 pins SATA connector , we also provide 22 pins SATA connector for total solution
- Color : black anodizing

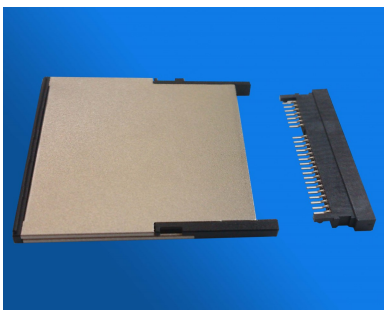
1.8CFAST CASE / Card Kit Type 1 / Type 2



CFast Case Type I

- CFast Case/ Card Kit Type I
- Interface : 7+17 pin connector

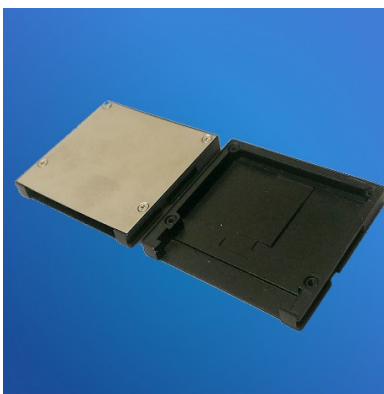
*Intended for
Professional imaging
/ Video
/ Industrial*



CFast Case Type II

- CFast Case/ Card Kit Type II
- Interface : 7+17 pin connector

CF CASE - Die casting



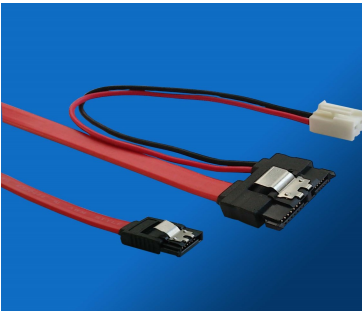
Product Description

- CF Case -Die Casting+Stainless Steel
- Thinnest place : 0.2~0.25mm
- Interface: CF
- Color : Black Painting
- For custom made only



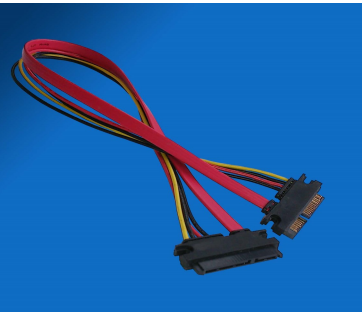
High Temp SATA 22 Pin Cable Assembly

- SATA 22 Pin to SATA 7 P +4Pin
 - Rated : -20~+105C
-



Slimline SATA 13 Pin Cable Assembly

- Slimline SATA 13 Pin Female to SATA 7 Pin
- For DVD recorder application



SATA 22 Pin Cable Assembly

- SATA 22 Pin Male to Female Cable
- For testing or extension purpose

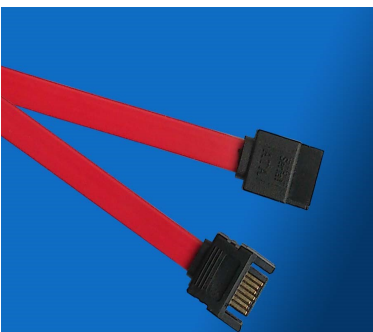
Custom-made

Is available



E-SATA to SATA Cable Assembly

- SATA 7 Pin Male to Female Cable



SATA 7 Pin to 7 Pin Cable Assembly

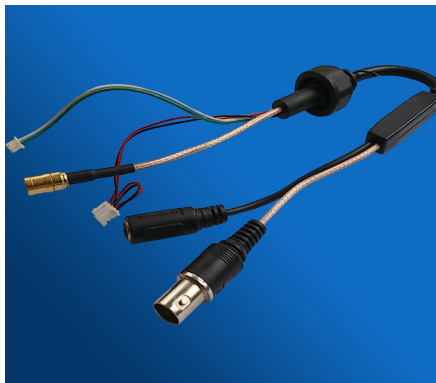
- SATA 7 Pin Male to Female Cable
- For testing purpose



RJ45 Jack+Terminal block

w/switch cable

- RJ45 Jack+Terminal block with Switch Cable Assemblies
- For Surveillance system



BNC+DC Jack+ RF connector Cable

- BNC+DC jack+RF with wire harness
- For surveillance application



BNC+Terminal Block Cable

- BNC+Terminal Block, w/7 Pin Housing



BNC/ F Jack+ DC Jack Water Proof Cable

- BNC/F jack+DC jack to 3 pin housing

Custom-made

Is available

RF Cable



Fakara C type to Ipex Cable

- Fakara C type to Ipex
- Coaxial cable 1.37mm

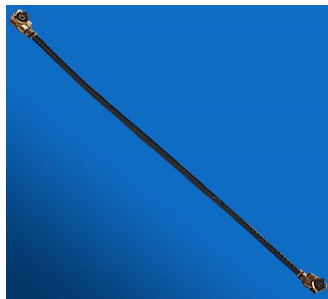
Custom-made

Is available



MMXC 90 to 180 Plug

- Assemblies with RG178 cable



Ipex to Ipex Cable

- Ipex to Ipex connector
- Coaxial cable 1.13mm



SMA Jack to MMCX R/A

- Assembled with RG174 cable

Custom-made

Is available



Ipex to SMA Jack Cable

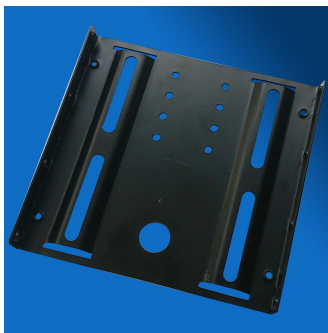
- Ipex to SMA Jack
- Mini Coaxial cable 1.13mm

Mechanical Parts



PCI-E Bracket

- SPCC with Nickel Plated.
-

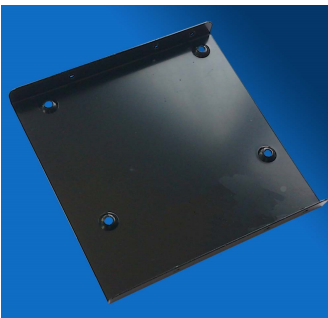


Bracket 2.5 inches to 3.5 inches

- Convert 2.5 inches SSD to 3.5 inches
- SPCC with electro-painting

Custom-made

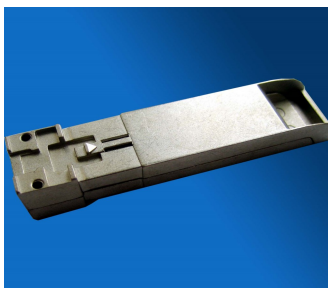
Is available



Bracket 2.5 inches to 3.5 inches

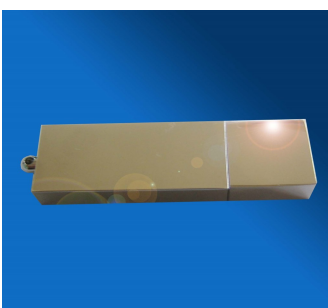
- Convert 2.5 inches SSD to 3.5 inches
- SPCC with electro-painting

Made in Taiwan



SFP+ Housing

- For SFP+ Cable
 - Zinc Alloy, die casting
-



USB Pen Drive Housing

- For USB Pendrive
- Zinc Alloy, die casting

About Evertron

We provide a wide variety of products and total solution in interconnect and mechanical parts, such as SSD case/ bracket, SATA / SCSI / RF cable & connector series, water proof cable etc.

To meet the dynamic requirements of OEMs in the infocom (PC, server), storage , networking, industrial, instrumentation, surveillance and military market.

Contact Information

Evertron Technology Co., Ltd

永創科技有限公司

330 桃園市桃園區

國際路二段138-5號12樓

(+886) 3 369-5542

tony@evertron.tech

造訪我們的網站：

www.evertron.tech

Interconnection Solution Provider

